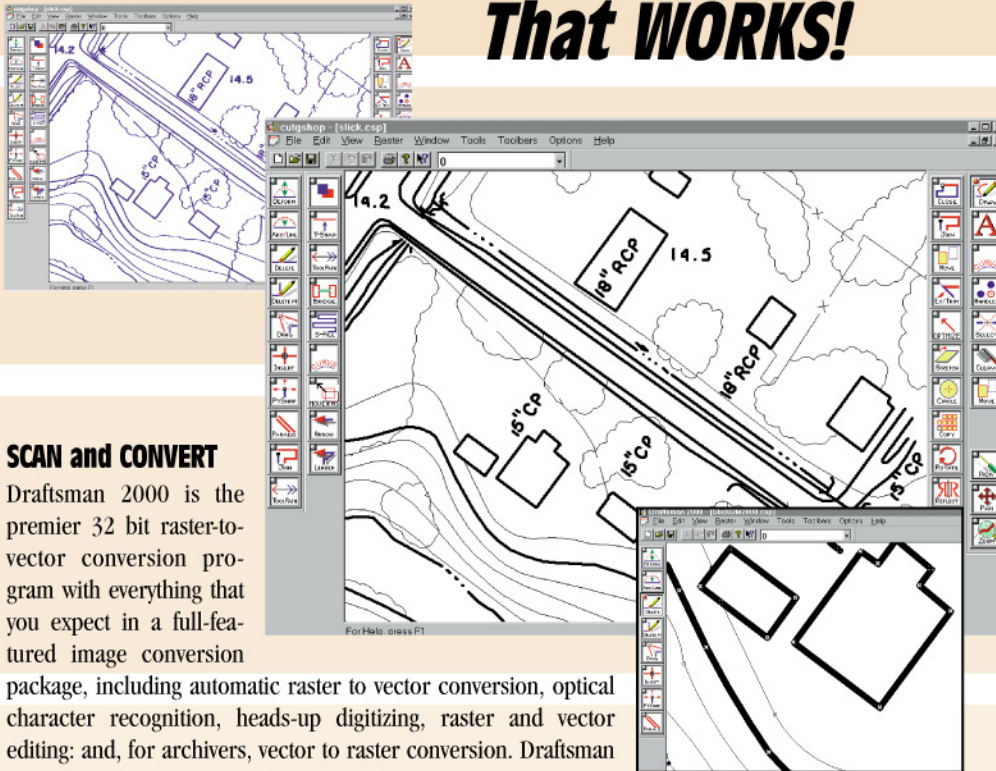


Draftsman[®] 2000



Raster-to-Vector Conversion That WORKS!



*An original blueprint is
scanned and converted, using
long lines and arcs.*

SCAN and CONVERT

Draftsman 2000 is the premier 32 bit raster-to-vector conversion program with everything that you expect in a full-featured image conversion package, including automatic raster to vector conversion, optical character recognition, heads-up digitizing, raster and vector editing; and, for archivers, vector to raster conversion. Draftsman 2000 imports color, gray and black and white images. It is simple to install, easy to use and extremely fast. Scans of prints, sketches and silhouettes are quickly converted into vector drawings that look like the original image.

FONTS

Any TrueType font can be instantly outlined with long lines and arcs. Whether it is a vectorized drawing or an outlined font, complex curves are made of a series of end-to-end arcs and outlines are closed polygons.

EDIT

Draftsman 2000 is a hybrid raster/vector program which comes with an impressive variety of vector and raster editing functions; stretch, scale, move, copy, delete, insert and join— about 40 of these tools are available. You'll find that vector editing done here is generally faster than using a CAD program.

EXPORT

Vectors are exported to all popular CAD and CAM programs through DXF, PLT, IGES and other vector formats. Vectors, raster or the combined raster and vector hybrid image can be saved or printed. Vectors can be drawn on the raster image and the combined raster/vector drawing may be saved back as a raster drawing.

EASE OF USE

Draftsman 2000 is quick to learn and easy to use. Clients have told us that they have paid for the program with as few as 2 - 10 conversions.

RASTER TO VECTOR CONVERSION

- Convert All or Selection to Vectors
- Color and Gray Support
- Silhouette Conversion
- Sketch Conversion
- Preset and User Definable Conversion Parameters
- Long Lines and Arcs

FONTS

- Silhouette any TrueType font
- Produces an outline of the font that consists of lines and arcs

OCR - Optical Character Recognition

- Area Selectable
- Produces CAD Text Entities

HEADS-UP DIGITIZING

- Snap to Raster
- Snap to Vector
- Raster Editing
- Vector to Raster Conversion
- Trace with Lines, Circles, Arcs and Annotation.

RASTER EDITING

- Vector to Raster Conversion
- Box and Polygon Erase
- Pixel Editing
- Hole Filling
- Raster Grid
- Despeckle
- Delete
- Copy

RASTER FILES IMPORTED/EXPORTED

- PCX • BMP • TIF • GIF • JPG
- RLC • CALS Group 4

VECTOR FILES EXPORTED

- DXF • PLT • IGES
- CGM • HPG • TXT • 2D

PRINTING

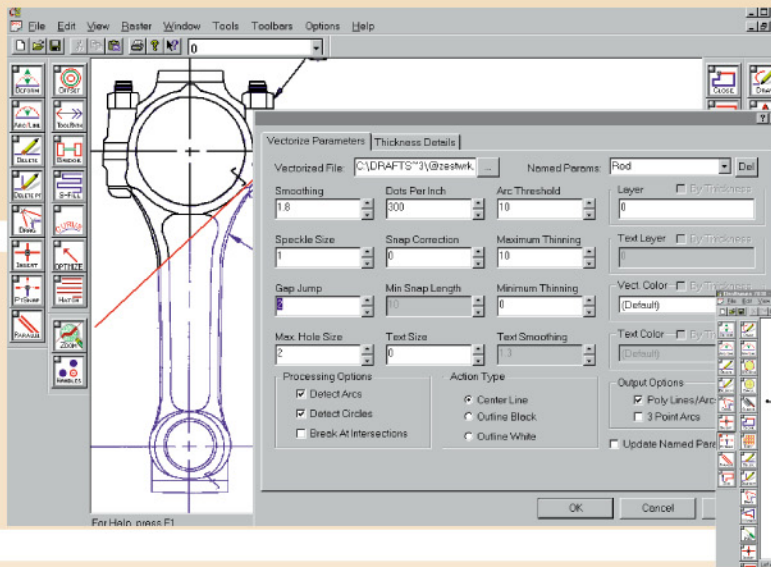
- Raster, Vector and Hybrid Printing



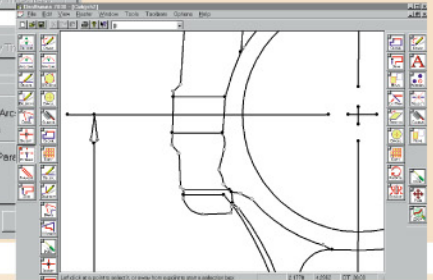
5651 Plymouth Road,
Ann Arbor, MI 48105-9586
Fax: (734) 741-8806
Voice: (734) 741-8700
E-mail: sales@arborimage.com
Web site: www.arborimage.com

A portion of this image was converted; vectors in black overlay the raster image in blue.

User definable and pre-set conversion parameters speed learning and conversion set-up time.



Black node points are at the end of polylines. Bulls-eye nodes show the common endpoints of lines and arcs.



Color Separation

This is a must for vectorization of color images! Several types of color separation are supported.

AUTOMATIC COLOR SELECTION

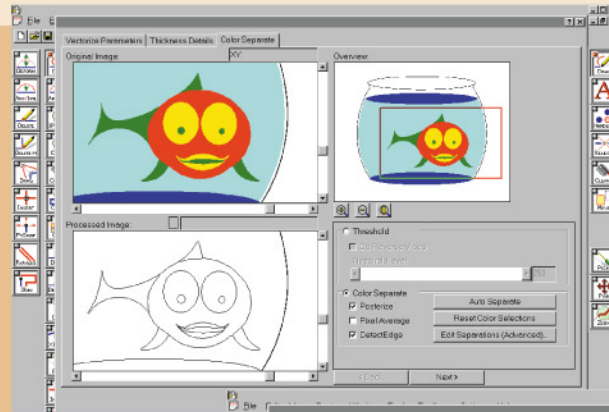
- Color images of pure colors are instantly outlined.
- For example, a 6-color logo designed with a paint program can be imported with the edge of each filled area automatically displayed.
- Where two colors share a common intersection one line is displayed. Selected color(s) can be deselected.

MANUAL COLOR SELECTION

- Manually select individual colors from complex color images such as photographs.
- Posterization
- Pixel Averaging - Noise Reduction
- Reverse image from black to white or white to black.

GRAY SCALE

- Gray scale and color images can be selected for thresholding so that the resulting black and white image is the one that is vectorized.



Automatically or individually select colors for vectorization.

The "bird's-eye" view aids zoom and panning during color selection.



SUGGESTED RETAIL PRICING

Draftsman 2000 is priced to suit your requirements: the three models LF, PF and HS are the same except for the size of the image each will process. The indicated sizes are for scans up to 300 DPI.

- * Civil includes rubber-sheeting
- ** Engineer includes batch processing
- *** Optimum includes both batch processing and rubber-sheeting

REQUIREMENT(S)

Windows 95, 98, NT or 2000
Minimum 32Mb ram

Product names are trademarks, or registered trademarks, of their respective corporations

SOFTWARE PROGRAM	MODEL	PACKAGE	SUGGESTED RETAIL PRICE
Draftsman 2000	BASE	LF Supports scans up to 16' feet Long	\$2,295.00
	BASE	PF Supports scans up to 11" wide	\$1,095.00
	BASE	HS Supports scans up to 6 1/2" wide	\$ 395.00
	* CIVIL	LF	\$2,495.00
		PF	\$1,095.00
	** ENGINEER	LF	\$2,795.00
		PF	\$1,395.00
	*** OPTIMUM	LF	\$2,895.00
		PF	\$1,495.00

To Print this brochure...

We recommend printing on a COLOR Inkjet (or better) printer.

The space under our logo on Page 1 (lower right) is for you to add your contact information.

Permission is granted to freely print and distribute this document.

Copyright © 2000 Arbor Image Corporation. All rights reserved.